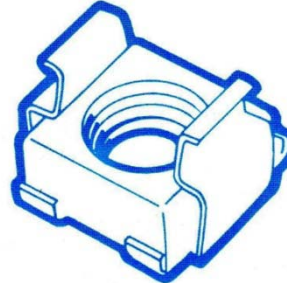


Cage Nuts

PJH Trading also offers an increased range of cage nuts thereby eliminating the need for weld or clinch type nuts.

Advantages:

- Fast and easy to apply
- Self retaining
- High strength
- Blind Fitting
- Low cost
- Can be installed after painting or powder coating – no cleaning up



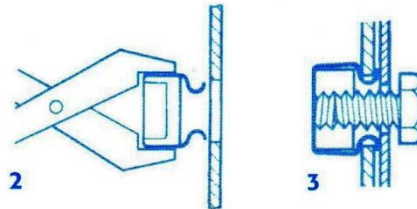
Material: Cage- Carbon Steel hardened, austempered **or**
Stainless Steel

Nut- Low carbon mild steel

Finish: Code 00 Blued, lanolin dipped
Code 13 Electroplated, yellow passivated
Code 24 Electroplated, zinc clear passivated

Method of Assembly:

1. Pierce hole in panel as per dimensions shown in data sheet.
2. Grip ears of cage nut together with pliers or similar tool and insert through panel. Release ears to enable expansion to locating hole side.
3. After releasing ears cage nut is held firmly in locating hole by spring tension. Then simply screw bolt through panel into retaining nut.



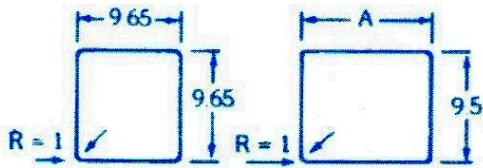
Dimensional Data and sizes

Thread Size	Sheet thickness	Hole size	Part no.
M4x0.7	0.71 ≤ 2.64 mm	2	0127 CBCN

M5x0.8	$0.71 \leq 2.64 \text{ mm}$	2	955B CBCN
M6x1.0	$0.71 \leq 2.64 \text{ mm}$	2	956B CBCN
M8x1.25	$0.71 \leq 3.52 \text{ mm}$	3	3185 CBCN
M8x1.25	$0.71 \leq 4,10 \text{ mm}$	3	3185L CBCN
M10x1.5	$0.71 \leq 4.10 \text{ mm}$	3	3187 CBCN

Hole Size 2

A = To customer requirements. R = Radius



Hole Size 3

A = To customer requirements. R = Radius

